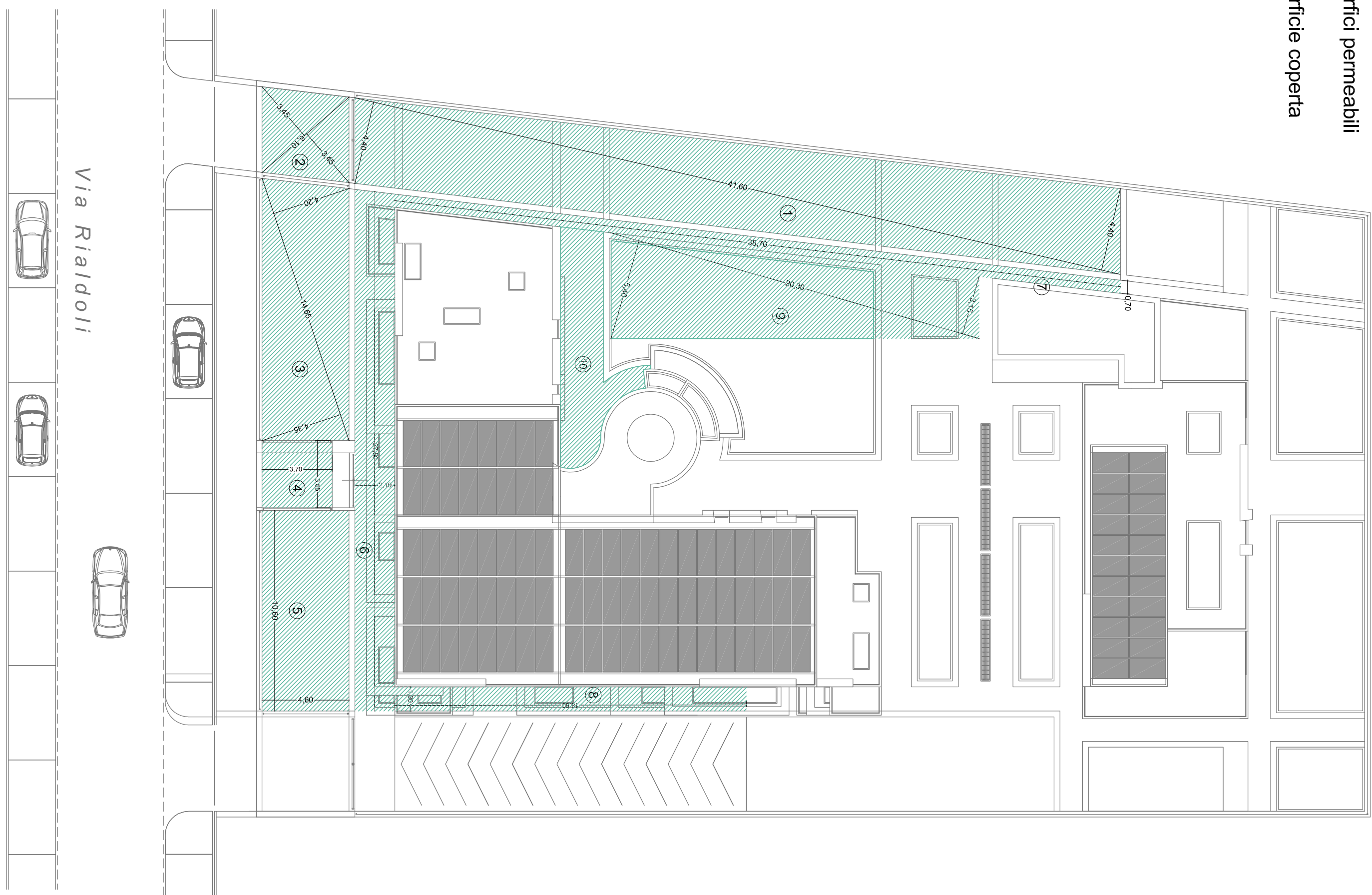


SUPERFICIE LOTTO	MQ	2.100,00
VOLUME ESISTENTE	MC	5.246,92
VOLUME MAX RICOSTRUIBILE	MC	(5.246,92 + 10%) = 5.771,61
VOLUME IMPIEGATO (SUL MAX) X H PIANO =	MC	(2.120,87 X 2,70) = 5.726,349
	MC	5.726,349 < 5.771,61
R.C. MAX = 40%	MQ	(2.100,00 X 40%) = 840,00
SUPERFICIE COPERTA	MQ	655,85 < 840,00
SUL MAX VOL. MAX = 5771,61 H PIANO 2,70	MQ	2.137,63
SUL TOTALE SUPERFICIE PERMEABILE	MQ	2.120,81 < 2.137,63
	MQ	(2.100,00 X 25%) = 525,00
	MQ	555,51 > 525,00

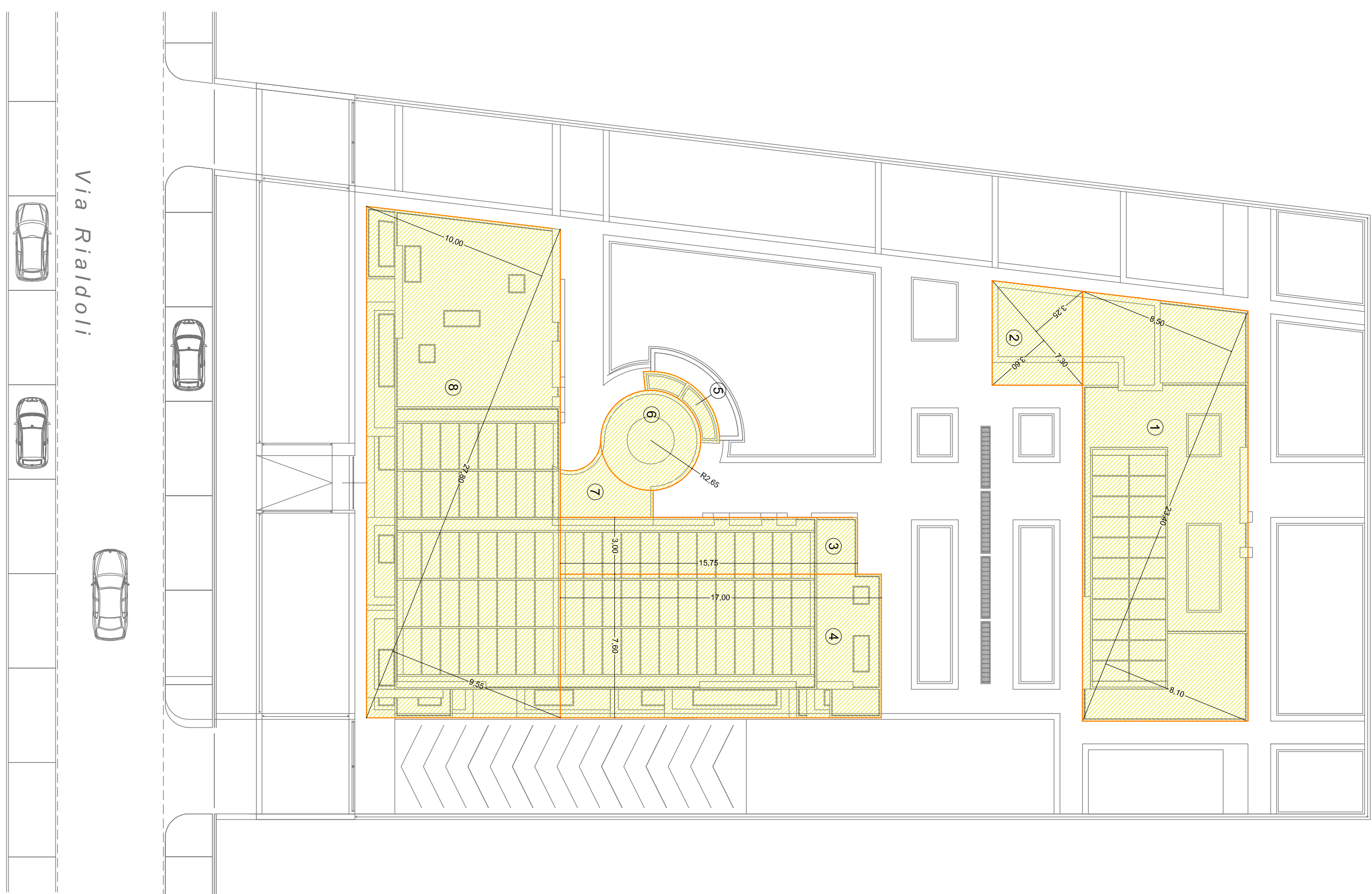
VERIFICA SUPERFICIE PARCHEGGI PER LA SOSTA PERTINENZIALE	MQ	881,48
SUPERFICIE AREA PARCHEGGIO	MQ	2.120,81 : 3 = MQ 706,93
S.U.L. : 3	MQ	881,48 > MQ 706,93
VERIFICA	MQ	881,48 > MQ 706,93

- Ingombro edificio
- Spazi di sosta pertinenziale
- Superfici permeabili
- Superficie coperta



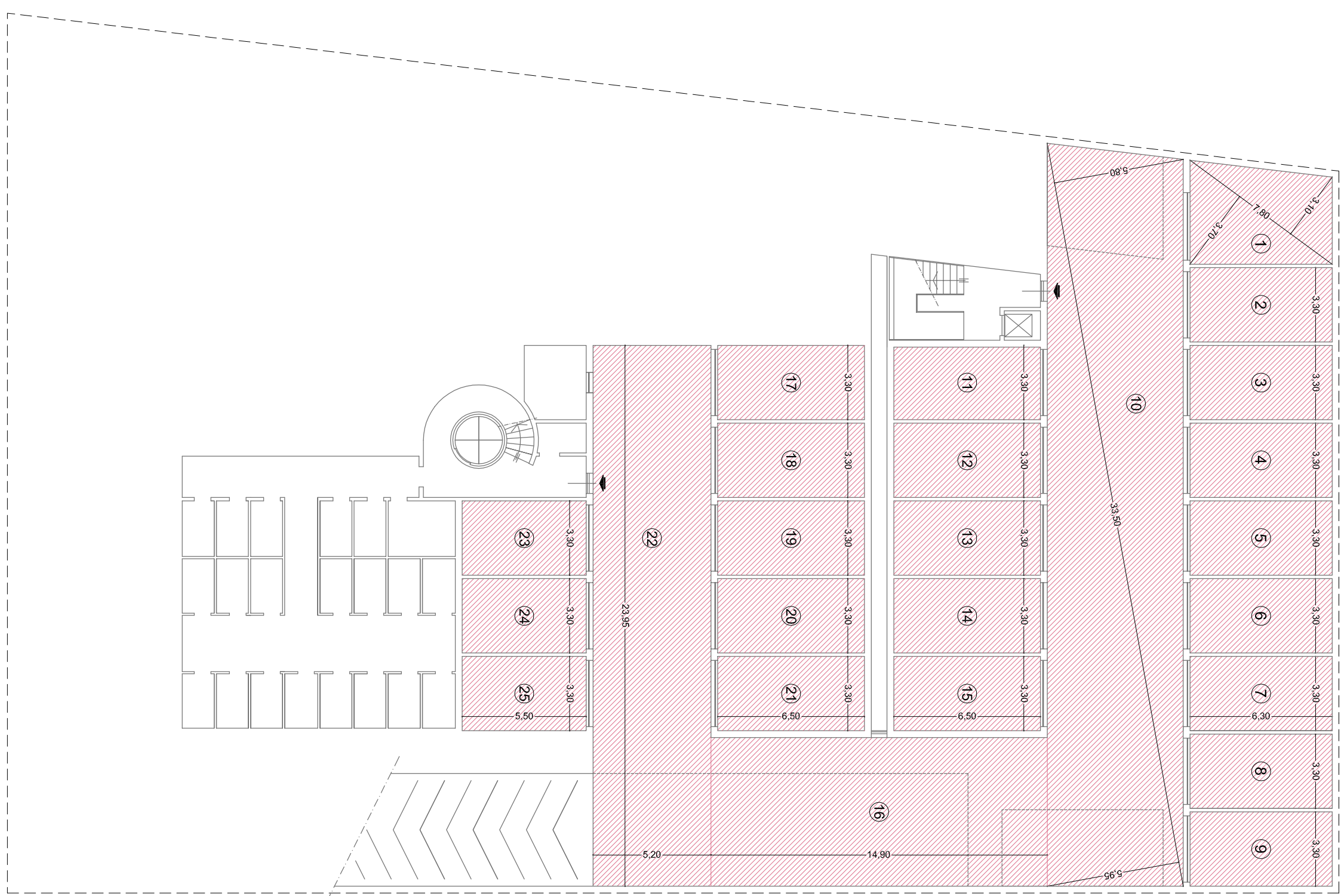
PIANTA COPERTURE

Superficie Permeabile	
1	[(4,60 x 4,40):2] + [(4,60 x 4,40):2] = 183,04 mq
2	[(6,10 x 3,45):2] + [(6,10 x 3,45):2] = 21,04 mq
3	[(14,65 x 4,20):2] + [(14,65 x 4,35):2] = 62,62 mq
4	(3,55 x 3,70) = 13,13 mq
5	(10,60 x 4,60) = 48,76 mq
6	(27,50 x 2,10) = 57,75 mq
7	(38,70 x 0,70) = 27,09 mq
8	(18,60 x 1,30) = 24,18 mq
9	[(20,30 x 3,15):2] + [(20,30 x 5,40):2] = 86,78 mq
10 = 31,12 mq
tot. 555,51 mq	



PIANTA COPERTURE

Superficie Coperta	
1	[(23,40 x 8,50):2] + [(23,40 x 8,10):2] = 194,22 mq
2	[(7,30 x 3,25):2] + [(7,30 x 3,60):2] = 25,00 mq
3	(15,75 x 3,00) = 47,25 mq
4	(17,00 x 7,60) = 129,20 mq
5	5,42 = 5,42 mq
6	(2,65)² x π = 243,42 mq
7	11,34 = 11,34 mq
tot. 655,85 mq	



PIANTA GARAGE

Superficie area parcheggi	
1	(7,60 x 3,10):2 + (7,60 x 3,70):2 = 26,60 mq
2	(3,30 x 6,30) = 20,79 mq
3	(3,30 x 6,30) = 20,79 mq
4	(3,30 x 6,30) = 20,79 mq
5	(3,30 x 6,30) = 20,79 mq
6	(3,30 x 6,30) = 20,79 mq
7	(3,30 x 6,30) = 20,79 mq
8	(3,30 x 6,30) = 20,79 mq
9	(3,30 x 6,30) = 20,79 mq
10	[(33,50 x 5,80):2] + [(33,50 x 5,80):2] = 198,81 mq
11	(3,30 x 6,30) = 21,45 mq
12	(3,30 x 6,30) = 21,45 mq
13	(3,30 x 6,30) = 21,45 mq
14	(3,30 x 6,30) = 21,45 mq
15	(3,30 x 6,30) = 21,45 mq
16	(6,80 x 14,80) = 98,84 mq
17	(3,30 x 6,30) = 21,45 mq
18	(3,30 x 6,30) = 21,45 mq
19	(3,30 x 6,30) = 21,45 mq
20	(3,30 x 6,30) = 21,45 mq
21	(3,30 x 6,30) = 21,45 mq
22	(23,85 x 5,20) = 124,54 mq
23	(3,30 x 5,50) = 18,15 mq
24	(3,30 x 5,50) = 18,15 mq
25	(3,30 x 5,50) = 18,15 mq
tot. 881,48 mq	